

Upgrading to SonoLab version 7.3 for E/LE220 Systems

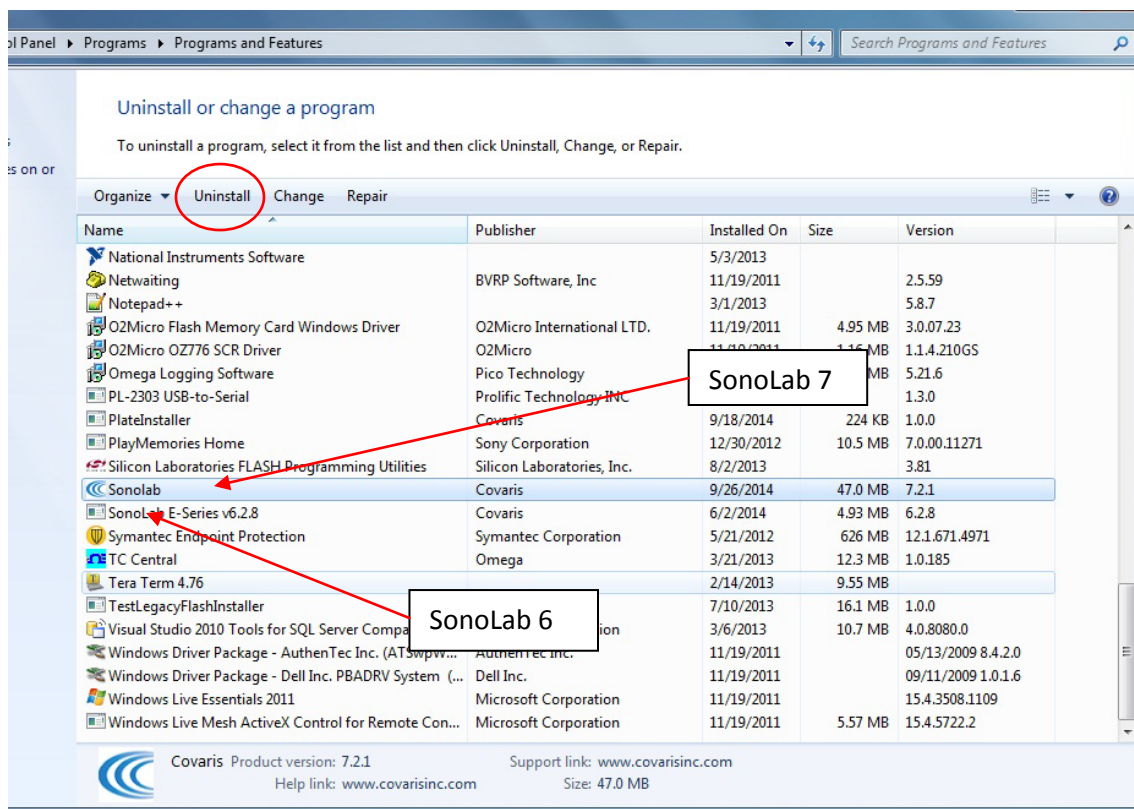
Migrating from SonoLab 6 to SonoLab 7.3 requires uninstalling the current version of SonoLab 7, installing SonoLab 7.3, and then installing the 7.3 well plate definition files.

1. Uninstall Current Version of SonoLab 7

1.1 Exit SonoLab and power down the instrument.

1.2 Click on Start -> Control Panel -> Programs -> Uninstall a Program

1.3 Scroll down, if necessary, and click on the SonoLab 7 line to highlight it (not SonoLab 6).



1.4 Click the 'Uninstall Button'. Windows will uninstall SonoLab 7 and it will be removed from this display. SonoLab v6.xx may be uninstalled, but this is not necessary, and is not recommended at this time.

1.5 Close the 'Uninstall Program' window.

2. SonoLab 7.3 Installation

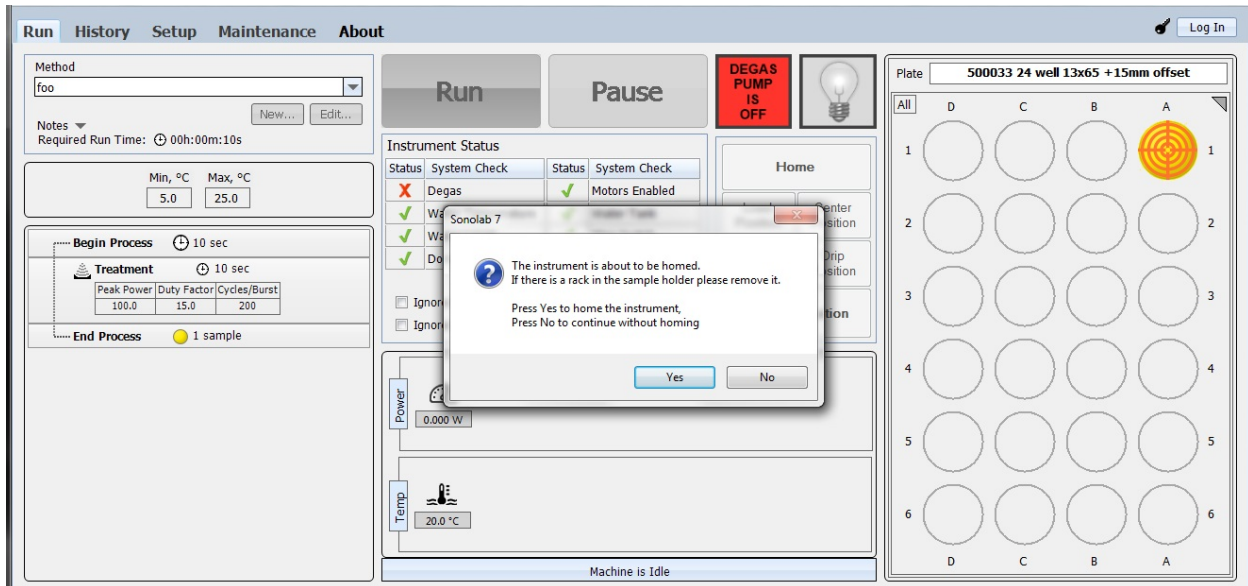
- 2.1 Place the SonoLab 7.3 and SonoLab Plate Installer on the computer.
- 2.2 Open the SonoLab 7.3 folder and double-click the Setup application. A standard Windows installer wizard will step through the installation. Normally, accept the default locations for the installation.
- 2.3 Click the 'Close' button when the 'Successfully Installed' message displays.
- 2.4 Open the Plate Installer folder and double-click the Setup application. The Windows installer wizard performs the installation. Click the 'Close' button when the 'Successfully Installed' message displays.

3. Running SonoLab 7.3

- 3.1 Power on the instrument and wait about 10 seconds. Double-click the SonoLab 7 shortcut. After a few seconds, the SonoLab splash screen displays.



3.2 Following the splash screen, the main SonoLab 7 screen is displayed, along with the 'Instrument is about to be Homed' message box.

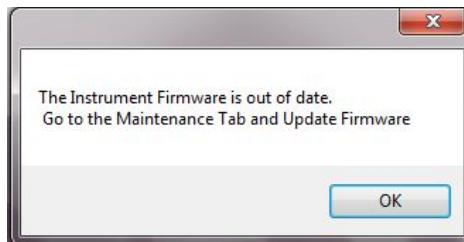


3.3 Click 'Yes' and verify that the system performs its normal homing operation. Following the homing operation, the degas pump will turn on, if there is water in the bath.

3.4 Refer to the Enclosed E/LE220 Users Manual to create treatment methods. Treatment methods must be recreated in SonoLab 7.

3.5 The SonoLab 7 plate installer provides most well plates available for the current E/LE220 instruments. If any of your current plates are not present, contact Covaris for any missing plate definition file(s).

Note: if the "Firmware is out of date" message is presented,



refer to the 'Maintenance Screen' section of the User Manual for instructions on performing the update.